

Eilbeck HEAVY MACHINING

GLOBAL

Eilbeck
CRANES

"One Company, Many
Global Services"

"One Company, Many Locations, Global Service"



→ Eilbeck History

The Eilbeck family have engineering in their blood, going back four generations to the first Tom Eilbeck, who arrived in Western Australia in 1892 from Cumberland England.

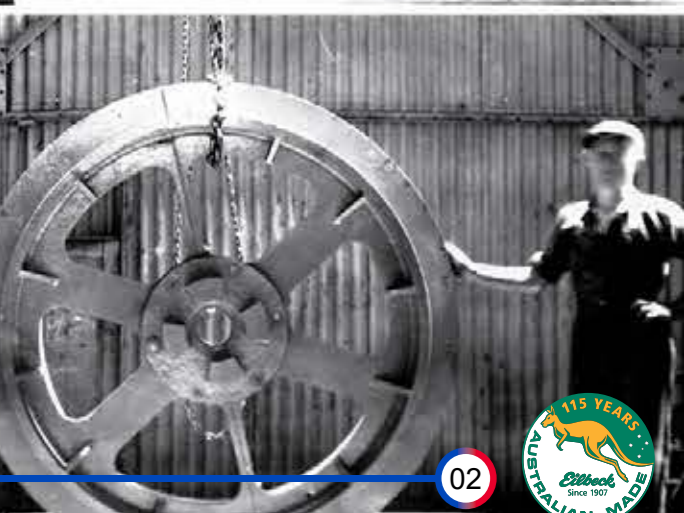
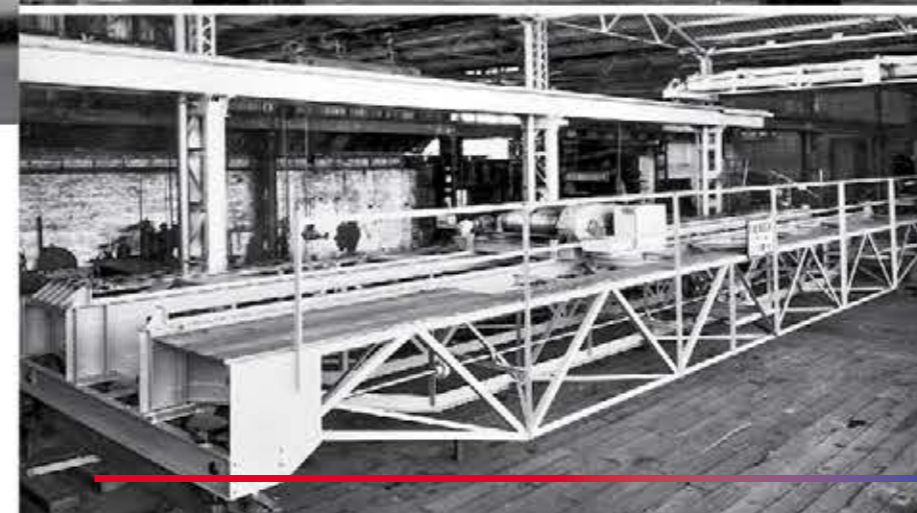
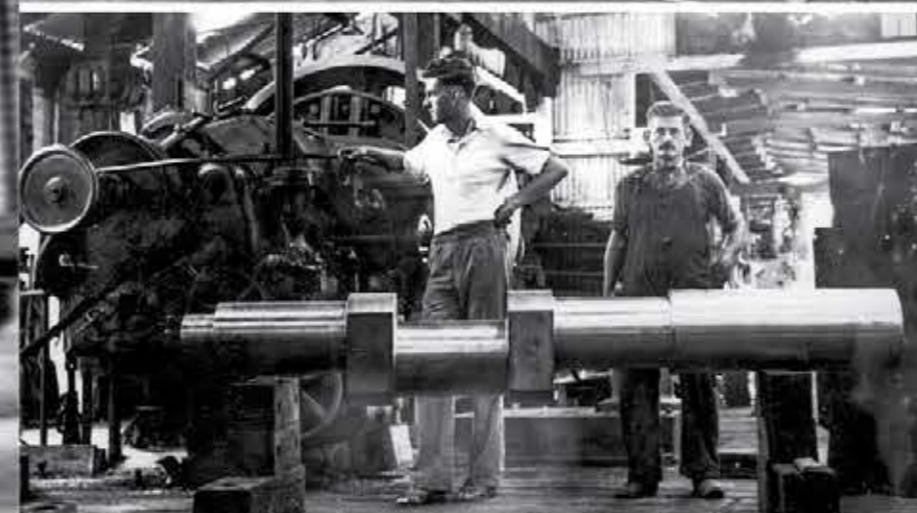
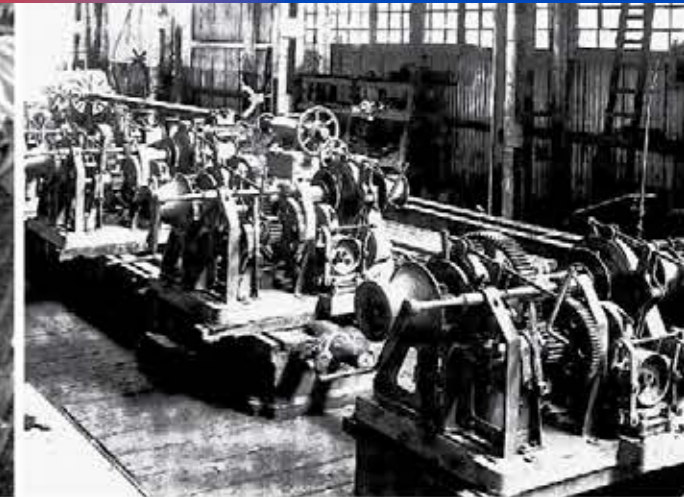
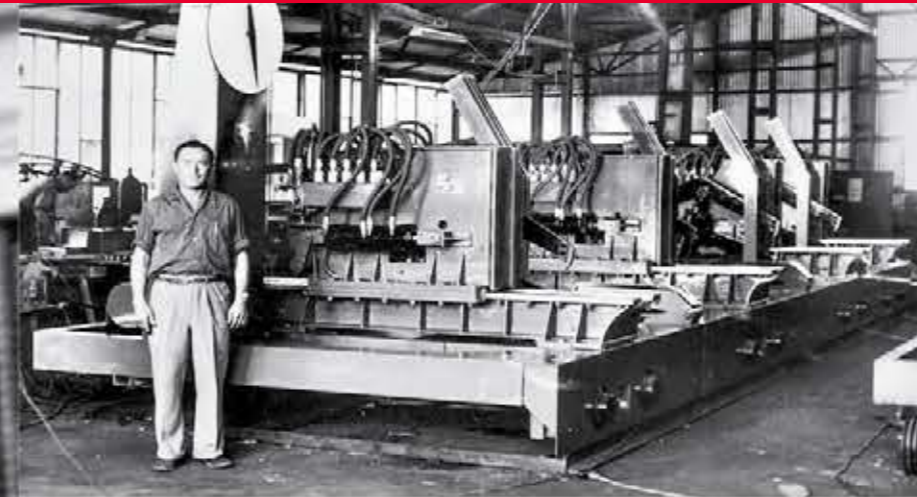
He was one of the first graduates of the University of Western Australia. In 1907 Tom Eilbeck went on to become the founder of T. Eilbeck and Son Limited, later becoming a distinguished businessman, not only recognised for his excellence in engineering but also for his political and business influence. Today, current Managing Director of Eilbeck Cranes, Tom Eilbeck grandson of founder shares not only the same name but possesses an equal drive for engineering excellence and innovation.

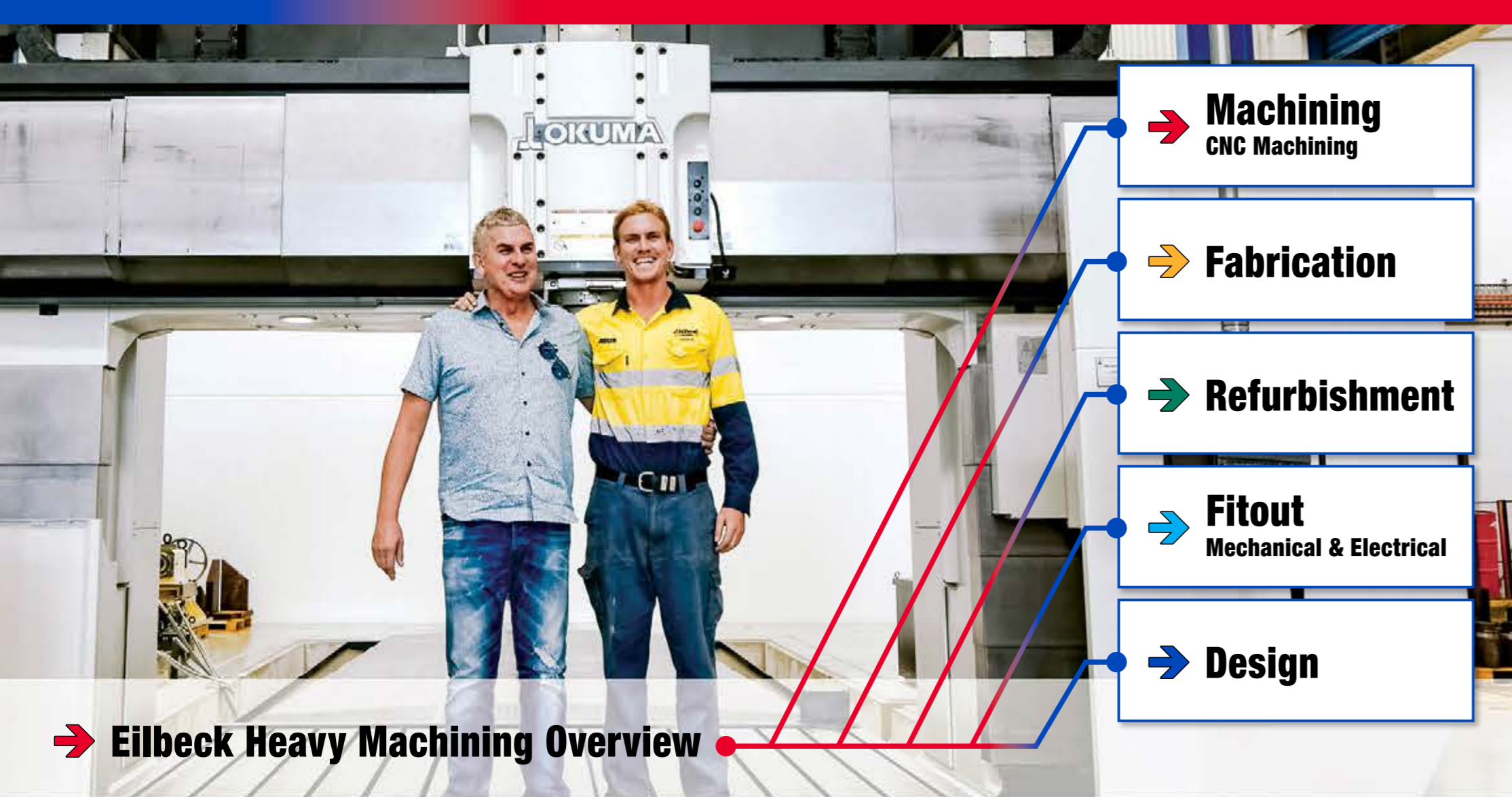
Traditional family values such as hard work and determination are not used as punch lines but rather have been foundation blocks in the history of this family's enterprise - Eilbeck Cranes.



These same core values are evident in the fourth generation, as Charlie Eilbeck, Toms son leads the Eilbeck business in a full loop, and is operating and growing a stand alone division focused on CNC machining, fabrication, refurbishment and engineering solutions as it did in the 1960's.

Since the Eilbecks in 2015 pushed back into the machining sector, Eilbeck has rapidly grown to become a prominent player in the national market. The strategy of investing in global leading CNC machines & leading technology coupled with four generations of engineering excellence is what sets Eilbeck apart and will retain Eilbeck as an industry leader in not only overhead cranes, but to lead the Australian market in heavy CNC machining and engineering!





→ Eilbeck Heavy Machining Overview

→ **Machining
CNC Machining**

→ **Fabrication**

→ **Refurbishment**

→ **Fitout
Mechanical & Electrical**

→ **Design**

Eilbeck Heavy Machining is a division that was created in order to create flexibility for Eilbeck Cranes to design and manufacture completely customised solutions for its diverse customer base throughout Australia and the globe.

With Eilbeck having such a dynamic manufacturing and engineering approach, it was a logical solution to retain the position at the top as a national leader in the Australian lifting industry. As Eilbeck invested further into their CNC Machining and Fabrication division, a large void was

recognised in the Australian heavy manufacturing market and Eilbeck decided to fill it and be a key player. This has been done by becoming not only a crane manufacturer, but a solution to national growing demand for large Australian hardcore manufacturers!

→ CNC Machining Capacity

→ TOS WRD 150 Horizontal Floor Borer

Eilbeck Heavy Machining's largest machine boasting a 13,000mm X-axis travel, 6,000mm Y-axis travel that can rotate up to Ø7,600mm on its 80 tonne rotary table. Complete with a facing head, boring quill and 5-axis indexing head.

→ Okuma MCR-A5CII Double Column Mill

Eilbeck Heavy Machining's largest vertical mill with a working table of 8500mm x 3500mm x 1750mm with a 90° head and a universal 1° indexing head.

→ Okuma Multus B750

Extremely high accuracy 5-axis multi-tasking lathe with a maximum swing of Ø1050mm and 6,000mm between centres and an 8 tonne capacity.

→ VT2000 Vertical Lathe

Eilbeck Heavy Machining's largest diameter CNC lathe which can swing Ø2650mm x 2100mm complimented by a 90° milling head and 15 tonne capacity.

→ GT5 Horizontal Lathe

A Horizontal lathe with a maximum swing of Ø1,200mm x 4,000mm between centres.

→ Okuma MB8000 Horizontal Mill Pallet Changer

This powerful 800mm squared twin pallet horizontal mill with 15,000 RPM spindle is perfect for production jobs.

→ GCM8 Bed Mill with 4th Axis Interface

Large machining capacity of 10,000mm x 1,100mm x 2,200mm featuring a 1° indexing head and a dividing head attachment.

→ Okuma 530V Vertical Milling Centre

A machine built for efficient setups and quick job turn around times with additional 4th axis interface.

→ Nakamura Tome NTRX 300

A 5 axis multitasking machine with twin spindles that is ideal for large quantity machining.

→ Okuma Space Turn LB4000

A Mill/Turn machine with a capacity to swing Ø670mm x 1520mm with X & Y axis capabilities.

→ Okuma VTM100

A large Vertical turning machine complete with milling ability that can handle workpieces up to Ø1,000mm x 840mm.





→ Key Clients

- Alcoa
- BHP
- Bechtel
- CSIRO
- Chevron
- Civmec
- Dana
- David Brown Santasalo
- Eickhoff
- Entropose
- Flender
- Fluor
- Gilmour Space
- Glencore
- HE Parts
- Howden
- Impex
- John Holland
- Laserbond
- Lendlease
- Metso
- Mobil
- Moly-Cop Comsteel
- Rio Tinto
- Sumitomo
- UGL
- Weir
- Worley

➔ Milling

Milling capacity of up to 13 x 6 meters in a single setup with the ability to rotate 7.6m up to 80 tonnes.



(Right) Gearbox Adapter for a leading global gearbox manufacturer.

(Far Right) 11m long mullions machined for a prestige civil engineer project in Sydney CBD.

(Bottom) Australian Made Railway Locomotive. Eilbeck is the preferred supplier in railway bogie machining nationally.



→ Turning

This part was originally proposed as a weldment for a key Australian power station, Eilbeck Heavy Machining thought outside the box and proposed to manufacture from a forged 316 stainless steel billet in order to increase accuracy required. This idea was well received by our client and we forged ahead. The completed part contained 1033 holes that required machined chamfers inside and outside!



Double Helical Gear complete manufacture

4,000kg Pinion Shaft, locally forged, locally machined (above and below)

Machined, heat treated, painted and assembled for multinational mining player for an Australian mine site!



➔ Fabrication

Ellbeck Cranes' Fabrication capacity is saturated with 115 years of knowledge and skill set.

The company is equipped with 7 fabrication facilities scattered around Australia, some equipped with up to 320t lifting capacity, remainder 40t lifting capacity!

The shops welding capabilities of SMAW, FCAW, GMAW, TGAW(TIG) to various Australian standards i.e. AS1554.1, AS1554.5, AS1554.5, AS1554.6.

Ellbeck are ready to tackle all new, overhaul/ refurbishment, turnkey projects, small or large!

(Right) 20 off Slow Speed Brake Brackets for a global leading company. All T-butts 100% full penetration welds, complete with 100% UT NATA tested, all fillets 100% MPI NATA tested.

Machined in house in a single set up to ensure 100% perpendicularity, complete painted, packaged and delivered to a great Australian gold mine! This also turned into a repeat order.



Fabricated, stress relieved and machined for Bluescope Steel.
Welded to AS1554.5, 100% UT on all butt welds by 3rd party NATA company, 100% MPI on all welds by 3rd party NATA company. All plate UT tested by 3rd party NDT prior to fabrication.



"We installed the slab lifter arms this week and are now in operation and performing well. Overall, I believe that tong arms were manufactured to a very high standard."

Peter Krellis
BlueScope Steel
Maintenance Team Leader
Slab Yard & Scrap Yard



➔ Assembly/Fitout

Eilbeck have over 30 engineers in house across the disciplines of mechanical, structural and electrical in conjunction with a dynamic manufacturing base at its finger tips able to design and manufacture any turnkey solution!

(Below) Howden Impeller Refurbishment with inhouse liquid nitrogen shrink fitting facilities of shafts upto 6m!

(Right Top) 1.6m diameter wire rope pulleys, welding to AS1554.5, manufactured 100% in house to arduous mine site specifications.

(Right Bottom) Eilbeck Crusher Hydroset Scissor, turnkey solution designed and manufactured 100% in house!



Eilbecks 100% in house designed, manufactured and assembled 12 wheel bogie! These bogies a bespoke design for a historical Australian Tunneling project. Used for handling major components of the tunnel boring machines used to dig the West gate tunnel. All steel sourced from Bluescope Steel, all Castings from Australian foundries, and all fabrication, machining, assembly and engineering by Eilbeck Cranes!

➔ Refurbishment

With eagerness to complete the impossible, Eilbeck Heavy Machining will often dive deeper than the rest. With a willing attitude and engineering in our blood, we love getting our hands on good refurbishment projects.

CNC Machining / Measuring:

With the assistance of modern CNC technology, we have the ability to accurately record dimensions and data of worn or new components. With the benefit of having large CNC machines, we can facilitate work pieces up to 200t! Seen on the right is the Renishaw touch probe system utilised on all of our CNC machining centres.



➔ Refurbishment Projects



Welding and Manipulating:

Eilbeck have great experience in various welding techniques. The most commonly used in house are FCAW, GMAW, TIG and SMAW. In addition to this we have welding booms and positioners capable of manipulating 30 tonne, these geared with twin wire sub arc welding machines ready to produce at superior rates!





Sydney - Heavy Machining / Assy
 41 Broadhurst Road
 Ingleburn NSW 2565
 Phone: 61 (02) 9618 1904
 machining@eilbeckcranes.com

Sydney - CNC Machining
 53 Lancaster Street
 Ingleburn NSW 2565
 Phone: 61 (02) 9618 1904
 machining@eilbeckcranes.com

Perth - Heavy Machining / Assy
 Henderson
 Under Construction
 Phone: 61 (08) 9279 4800
 machining@eilbeckcranes.com

Sydney - Manufacturing
 6 Moorlands Road
 Ingleburn NSW 2565
 Phone: 61 (02) 9829 3700
 sydney@eilbeckcranes.com

Melbourne - Manufacturing
 321 Doherty's Road
 Truganina VIC 3029
 Phone: 61 (03) 9369 7444
 melbourne@eilbeckcranes.com

Perth - Manufacturing
 28 Jackson Street
 Bassendean WA 6054
 Phone: 61 (08) 9279 4800
 perth@eilbeckcranes.com

Mackay - Manufacturing
 32 Diesel Drive
 Paget QLD 4740
 Phone: 61 (07) 4998 5599
 mackay@eilbeckcranes.com

Adelaide
 2/23 Clovelly Avenue
 Royal Park SA 5014
 Phone: 61 (08) 8162 5150
 adelaide@eilbeckcranes.com

Brisbane
 3/12 Sudbury Street
 Darra QLD 4076
 Phone: 61 (07) 3376 8255
 brisbane@eilbeckcranes.com